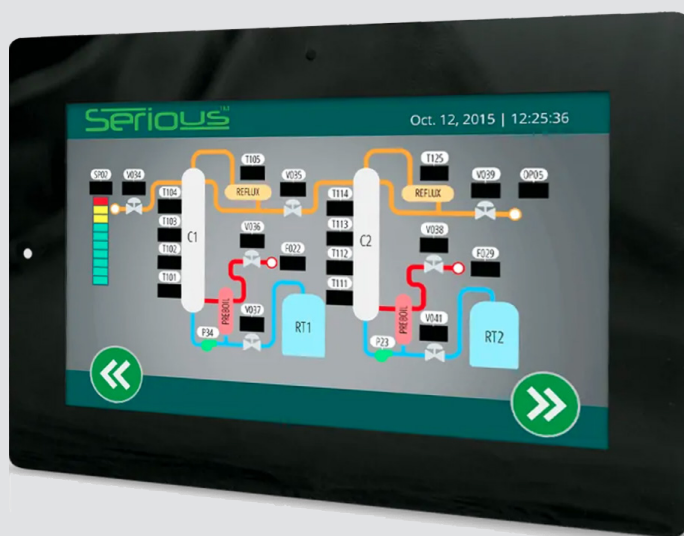


High Performance HMI - SIMx62

High Performance for Leading-Edge Embedded HMI Projects.

Key Features & Benefits

- Supports open-source OS and high scalability
- Focused secure implementation
- Enables rich GUI implementations with balanced power consumption
- Ultimate combination of design flexibility and performance



Technical Specifications

	Family	SIMx62
PRODUCT	<i>Not all combinaisons are possible. Please contact our E2IP team for more information.</i>	
	Variant	A01
	LCD	C85LLDF / C43ALMDM/ C43ALMDK / R43ALLDA / C85LLSFM / C33ALSFG
	LCD special features	~3mm w/ASF / ~3mm AG / ~1mm AG / ~1mm / ~1mm AG+AF
	Options	CC
	Qty / MUL	5
	Type	Special Order / Standard
DISPLAY	LCD Typ brightness NITs	300+ / 400+ / 500+ / 800+
	Color depth (bit)	24
	Resolution	800x480 / 1280x800
	LCD view type	Landscape / MVA / IPS
	LCD size (Inches)	7 / 10,1
	LCD and operating Temp (C)	minus 20 to +70 / minus 30 to +80 / 0 to +50
TOUCH SCREEN	LCD Min Backlight Halflife (kHrs)	30 / 50
	Touch	Capacitive / Resistive 4-Wire
	Life	30K / 50K
	Ambient Light Sensor	Y / N
ELECTRICAL	Vin DC (V)	10,80 to 35
	User LED	N/A

SYSTEM	MCU Family	RZ/G1E
	MCU Core (MHz)	1000
	MCU Core type	ARM Cortex A7
	MCU Core count	2
	MCU Core flash (kB)	N/A
	MCU Core RAM (kB)	332
	SPI NOR Flash (MB)	4
	SPI NAND Flash (MB)	N/A
	eMMC (GB)	4
	SDCard Socket	1
	RAM Size (MB)	128
	RAM Type	DDR3
	RAM Speed (MHz)	1333
	Battery Backed RTCC	Y
USB PORTS	USB Hosts Ports	1
	USB Hosts Connectors	1
	USB Host Speed (Mbps)	480
	USB Device Ports	1
	USB Device Connector	1
	USB Device Speed (Mbps)	480
I/O PORTS	UART	1
	RS485 Transceiver	1
	CAN channels	N/A
	CAN Transceiver	N/A
	LIN channels	N/A
	I2S	1
	I2C	1
	Ethernet Channels	N/A
	Ethernet RJ45	N/A
	WiFi	N/A
	BT	N/A
	802.15.4	N/A
	RGB LED Drivers	N/A
	Audio Output	I2S+Line Out+Speaker 3W Amp
GUI Development		SHIPTide
BSP		SHIPCore



**Transforming the surfaces we
touch in our everyday lives.**

For more information, speak with
a specialist at e₂ip technologies.

We're always looking forward to
hearing from you!

info@e2ip.com

1 866-631-6662

750 Marcel-Laurin, Suite 375
St-Laurent, Québec
H4M 2M4
Canada

e2ip.com

